

Stage Dimensions

Proscenium Opening: Width 46' 8" max., Height 22' 4"
Setting Line: to US wall 40' 5", to DS Edge of Pit Elevator 14' 3"
Centre Line: to SL Wall Clear 50' 2", to SR Wall Clear 44' 2"
Stage Floor to Under Grid: 49' 9"

Fly Information

Total Sets of Lines: 51 (0 - US/DS)
Occupied Lines: 26 (#1, 2, 3, 5, 6, 11, 12, 13, 15, 16, 19, 21, 22, 26, 27, 30, 31, 39, 40, 43, 44, 46, 47, 48, 49, 51)
Trapped Lines: 5 (#7, 18, 20, 38, 41) See Line Set Schedule
Loading Capacity: 1000 lbs
Length of Pipes: 63' 2"
Maximum Flying Height: 47' 0" to 48' 0"

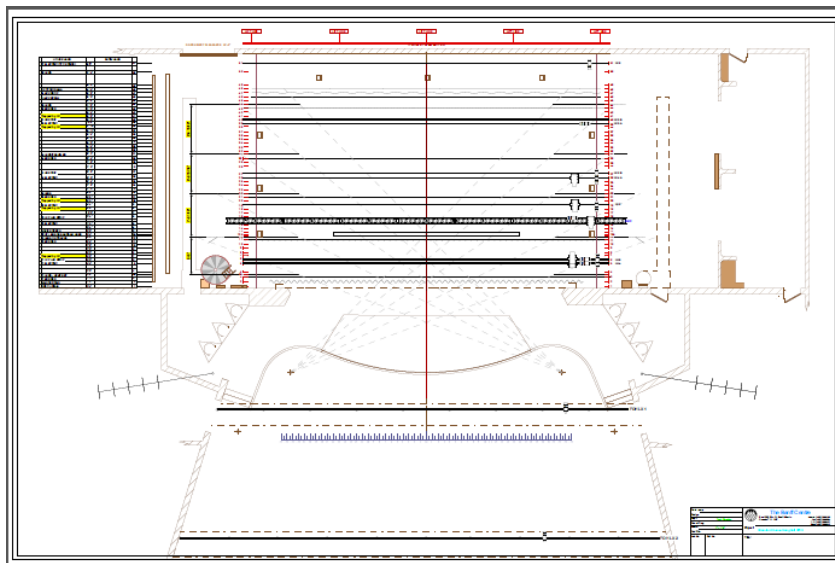
Stage Goods

Main Curtain	1 @ 22'0" x 46' 0"	Brown Velour (w Fullness)
Legs	10 @ 25'H x 16'W	Black Velour (Flat)
Borders	5 @ 15'H x 63'W	Black Velour (Flat)
Border Tabs	4 @ 15'H x 10'9"W	Black Velour (Flat)
Black Drops	1 @ 25'H x 63'	Black Velour (Flat)
Black Traveller Tabs	2 @ 25'H x 30'W	Black Velour
Additional Tabs	2 @ 29'6W x 25'H	Black Velour
R.P. Screen	1 @ 24'H x 60'W	White (Twin White)
White Scrim	1 @ 24'H x 60'W	Sharkstooth
Black Scrim	1 @ 24'H X 60'W	Sharkstooth

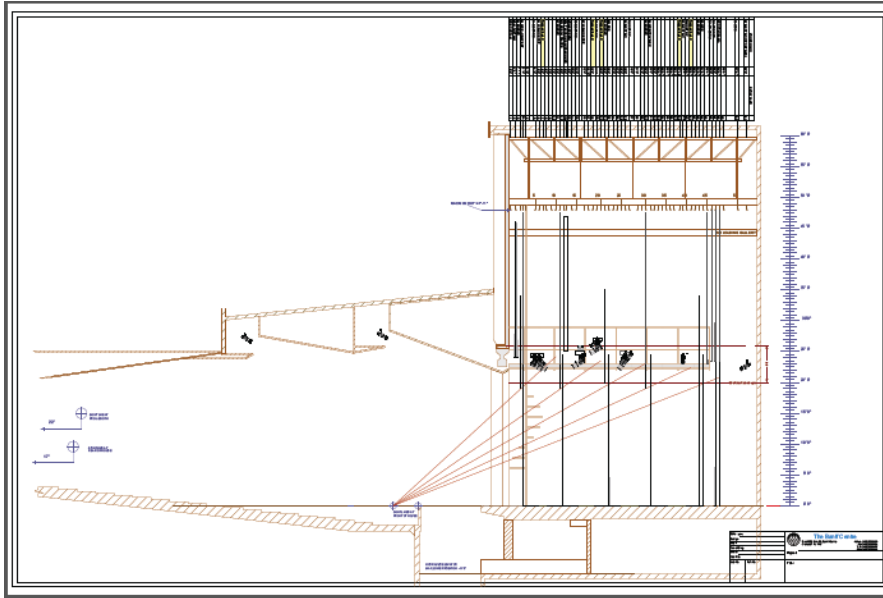
Orchestra Pit

Pit Dimensions: 45' 11" wide x 27' 5" long x 8' 7" deep
Capacity: 60 Musicians Maximum
Related Equipment: various 9' and 7' grand pianos by arrangement, 100 music stands, chairs and lights.

Plan View



Scale Section



Electronic or hard-copy drawings of Theatre Complex performance spaces, repertory lighting plots and line plots are available by contacting: murray_palmer@banffcentre.ca

Lighting

Control System

Main console: ETC Gio, 999 cue lists, 300 submasters, 10,000 channels (devices), 200 active playbacks

Remote console: ETC Gio, 999 cue lists, 300 submasters, 10,000 channels (devices), 200 active playbacks.

Dimming: Strand C21, dimmer-per-circuit.

Dimmers: 400 @ 2.4K and 6 2.4K dual Non Dim contactor modules available.

Instrument Inventory

Instruments	Quantity	Field Angle
ETC Source 4 Fixture Body	131	
ETC Source 4 Lens Tube: 10°	2	10°
ETC Source 4 Lens Tube: 19°	6	19°
ETC Source 4 Lens Tube: 26°	55	26°
ETC Source 4 Lens Tube: 36°	62	36°
ETC Source 4 Lens Tube: 50°	6	50°
Colortran 6" 1kw Zoom	24	15°-35°
Colortran 6" 1kw Zoom (w/iris)	12	15°-35°
Colortran 6" 1kw 12/20/30/40	46	
Colortran 6" 1kw 20/30/40 (w/iris)	8	
Strand 6" 1kw Axial LEKO Body*	20	
Strand Lens Tube: 6x12	4	28°
Parellisphere 1kw Zoom	16	23°-50°
Altman 8"1kw PAR-64 (W,M,N,VN)	21	
Strand 10" 2kw Fresnel (Patt 243)	2	16°-50°
Strand Iris-3 1kw Cyc Light	10	
Selecon Aurora-4 1kw Ground Row	11	
Vari*lite VL-1000AS	4	19°-70°
Vari*lite VL-3500Q (Spot)	4	10°-60°
Vari*lite VLX-LED Wash	6	23°-58°
Pani HMI-1200 Follow Spot	3	10°
I-Cue	2	

Sound

LOCATION:

SOUND BOOTH: House Right rear of auditorium with sliding window

HOUSE MIX POSITION: Rear of audience area centre

MONITOR MIX POSITION: Down Stage Left

MIXING CONSOLE: Digico SD9 - Permanently installed in Sound Booth

TAPE MACHINES/PLAYBACK: 1 Tascam CD450 Player

BOOTH MONITORS: Tannoy PBM8 with Bryston 3B Power

INSTALLED SPEAKERS: **Fall, Winter, Early Spring Set-up**

Central cluster - 2 Apogee AE5 Speakers w/Crest Power

Left & Right Mains - 1 Meyer M'elodie Line Array (8 per Side) and 700P Sub per side

Stage Dance Side-fills - 4 Meyer 500R speakers (2 stage left and 2 stage right mounted off of the lighting bridges),

Front Fill – Meyer M'elodie Line Array (3 across front of pit)

INSTALLED SPEAKERS: **Late Spring, Summer Set-up**

Central cluster - 2 Apogee AE5 Speakers w/Crest Power

Left & Right Mains 1 Meyer CQ1, UPA1C and 650P Sub per side

Stage Dance Side-fills - 4 Meyer 500R speakers (2 stage left and 2 stage right mounted off of the lighting bridges),

Meyer 500 Amplifier/processor powered

INTERCOM SYSTEM:

Master Station: Location - D.S.R.

Type: Clear Com.

24 locations within the theatre

3 Wireless Intercom packs

Sound Reinforcement System Notes:

Maximum levels at the back of house are 96dBC. As a general guide if your event has a band with drums, bass, guitars and or percussion, external or supplementary PA equipment may be required..

Please confirm what is available for your show with:

Murray Palmer, Technical Director

(403) 762-6479 or e-mail murray_palmer@banffcentre.ca

Road Power

400A, 200A, and 100A three-phase disconnect switches, all fed from THE SAME 400A disconnect located in SL Wing. This must be booked in advance. Some 50 Amp Range Receptacles are available at other backstage positions.

Shared House Equipment

See the PDF file of supplementary equipment for the Theatre Arts performance spaces. Please note, any equipment must be assigned to your production. Some equipment may be assigned to other groups or venues and not available for your performance.

Adding additional equipment and/or changing the location of house equipment (i.e. lighting, drapes, speakers etc.) may require additional labour and/or additional set-up and restore days.